

Generate your Power

Control Software PV.GuarD

The PV.GuarD software has been developed for application in operation management of large PV power plants. The high-performance IPC in the data logger saves data over several years and in high-resolution quality, required to carry out comparative calculations throughout the life of PV power plants. Additionally, performance comparisons can be made between various plants and individual components. In this way, faults in the plant become apparent to the plant manager at an early stage. The system documents these faults so that warranty claims can be verified and one can keep a check on service works as well as other possibilities.

Front End

Each monitored plant has an overview that shows the most important and informative data of the PV power plant. This page can also be customised, for example by integrating a logo and adding general information about the plant.

Overview for Analysis

The overview entails comprehensive plant representation of all devices installed in the PV power plant.

Zoom Function

- Data resolution in 1 minute mean values
- Mathematical functions, for example, Min./Max./Mean/Delta Values

Value Representation

- Identification and analysis of defects in modules
- Exact display of each measured value
- Storage of user-defined views
- Professional Diagram Viewer

Export and Print Functions

- Graphics can be exported in PDF, SVG and PNG formats for documentation purposes
- Display of tables in MS-Excel-compatible formats and HTML
- Print option for diagrams

Error Configuration and Alarm Handling

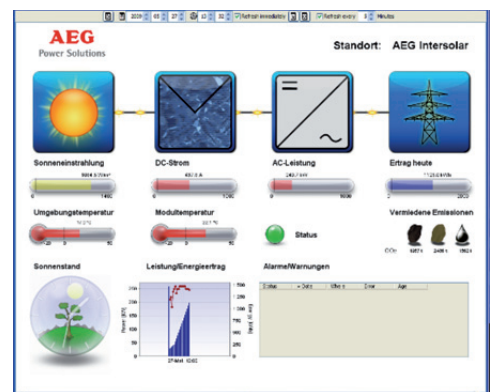
- Configurable value margins and tolerances
- Alarm notification by email
- Alarm history including the timestamps of the first and the most recent occurrence as well as error description
- Multi-stage alarm acknowledgement

Plant Map

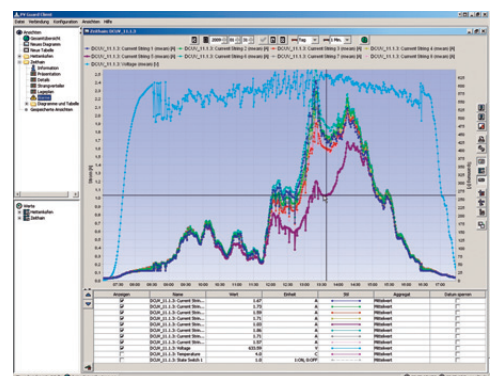
- Quick Navigation with Minimap
- Real layout of the PV power plant including location of inverters, combiner boxes and sensing devices
- Access to detailed views of devices
- Colored marking of different fault categories and alarm conditions

Web Interface

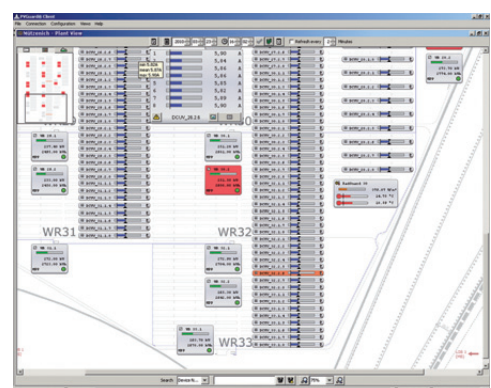
Tool to monitor relevant measuring data and calculations from the monitoring system.



Front End



Detailed Overview



Plant Map